

ELEMENTOS DE TRANSPORTE (DIE LIFTING PINS)

5437

P.S.A.



E72-14-610-N

E24-59-950-G

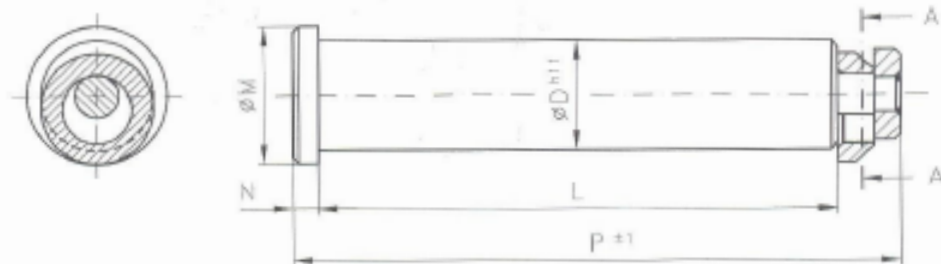
COTAS SIN TOLERANCIA: $\pm 0,25$

FORMA DE PEDIDO: 5437 - \varnothing nominal

WITHOUT TOLERANCE HEIGHTS: ± 0.25

HOW TO ORDER: 5437 - \varnothing nominal

Sec. A-A



| CAPACIDAD PORTANTE LOADING CAPACITY CAPACITY Tons | Ø NOMINAL D | L | Ø M | N | P | CÓDIGO MABEC MABEC CODE |
|--|----------------|-----|--------------|----|--------|----------------------------|
| 6,3 | 32 | 132 | $40 \pm 0,8$ | 6 | 154 | P 953 254 770 |
| 10 | 40 | 170 | $50 \pm 0,8$ | 8 | 197,75 | P 953 255 870 |
| 16 | 50 | 212 | 63 ± 1 | 10 | 247,6 | P 953 256 670 |
| 25 | 63 | 265 | 80 ± 1 | 12 | 309 | P 953 257 470 |