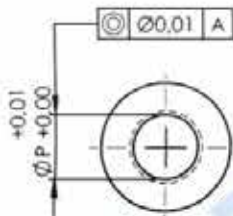
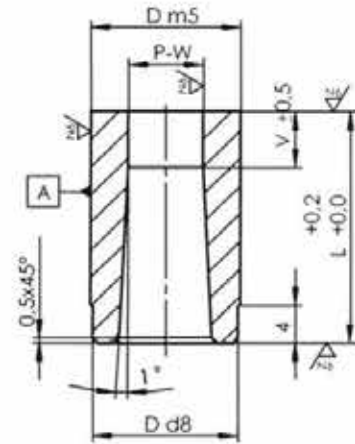
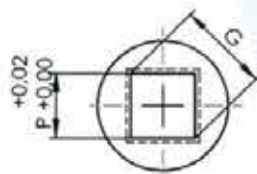


MATRIZ LISA CÓNICA

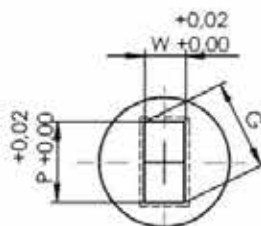
REF. 864L



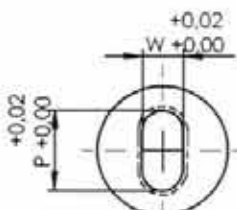
864L1



864L2



864L3



864L4

| D | V | P-W Mini. | P-G Maxi. | L |
|----|---|--------------|--------------|-------|
| 8 | 5 | 2 | 4 | 25 32 |
| 10 | 5 | 2 | 6,5 | 25 32 |
| 13 | 5 | 2 | 8,5 | 25 32 |
| 16 | 5 | 2,5 | 10,5 | 25 32 |
| 20 | 5 | 3,2 | 13,5 | 25 32 |
| 22 | 6 | 4 | 15 | 25 32 |
| 25 | 6 | 4,8 | 17 | 25 32 |
| 32 | 6 | 5,5 | 23 | 25 32 |
| 38 | 8 | 6,4 | 28 | 25 32 |
| 40 | 8 | 6,4 | 30 | 25 32 |
| 45 | 8 | 8 | 35 | 25 32 |
| 50 | 8 | 9 | 40 | 25 32 |
| 56 | 8 | 10 | 46 | 25 32 |
| 63 | 8 | 11 | 53 | 25 32 |

MATERIAL: 1.2379 y HSS
TRATAMIENTO: T. y R. 60±63 HRc.

De no especificar material se suministrará 1.2379

COMO PEDIR:

Código pieza.
Diámetro cuerpo.
Dimensiones forma.
Grados antigiro (si se desea antigiro).
Grados antigiro.

EJEMPLOS DE PEDIDO:

864L1 D-13 P-6 L-25
864L1 D-13 P-6 L-25-S-0°
864L2 D-13 P-6 L-32-S-90°
864L3 D-13 P-8 W-5 L-25-P-0°
864L4 D-13 P-8 W-5 L-32-ES-45°

ANTI GIROS:

0°, 90°, 180°, 270° ó X-° (a especificar) ver página de antigiros.